

FIGURE 1

SURFACE OF GRATE MUST BE CLEAN AND FREE OF DIRT AND DEBRIS. POSITION VERTI-PRO SQUARELY ON THE GRATE. INSTALL TOGGLE BOLT ASSEMBLY (SEE FIGURE 2). THE HOLD DOWN PLATE MUST CONTACT BOTH LOWER FRAME FLANGE AND GRATE. THE TOGGLE BOLT MUST ENGAGE TWO BARS ON GRATE. REPEAT ON OPPOSITE SIDE OF VERTI-PRO

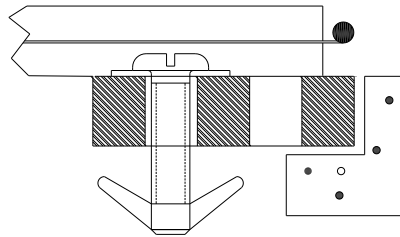


FIGURE 2

THE VERTI-PRO HAS FOUR LEGS THAT UNFOLD JUST LIKE A CARD TABLE. (SEE FIGURE 3) ROTATE LEGS TO UPRIGHT POSITION ON DIAGONAL CORNERS, THIS WILL SUPPORT THE UPPER FRAMEWORK OF THE VERTI-PRO. ALIGN HOLES IN EACH LEG WITH THE TWO HOLES IN UPPER FRAME. INSERT A PLASTIC RETAINER IN OF THE HOLES FROM THE OUTSIDE IN.

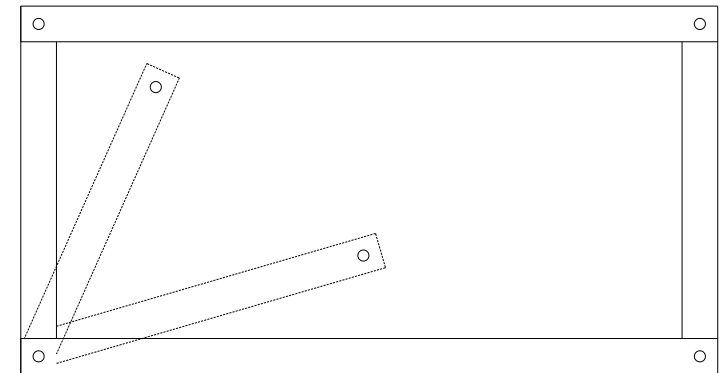
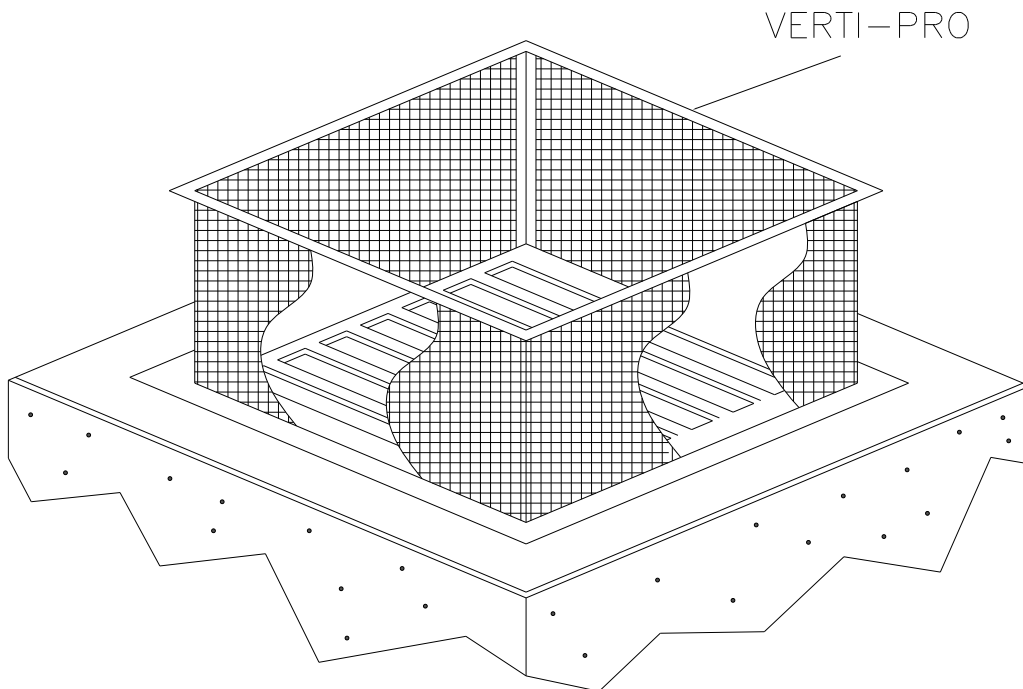
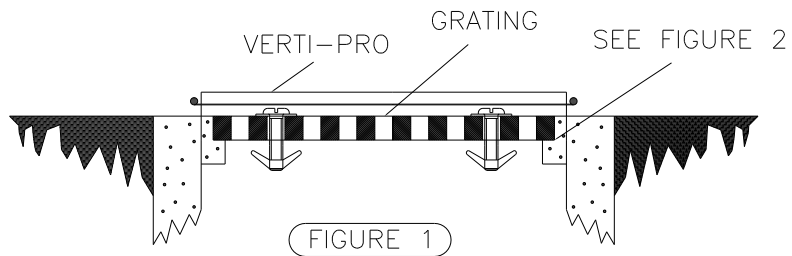


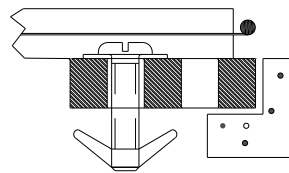
FIGURE 3

MAINTENANCE: INSPECT AFTER EACH RAIN. REMOVE DEBRIS AND CAPTURED SEDIMENT WHEN DEPOSITS REACH 7" OR THE HEIGHT OF THE VERTI-PRO. REMOVE CAPTURED DEBRIS FROM THE VERTI-PRO FABRIC WITH A STIFF BRISTLE BRUSH

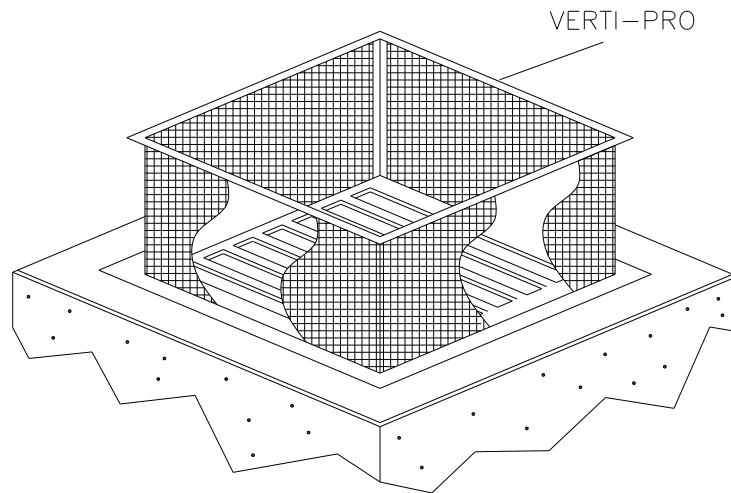
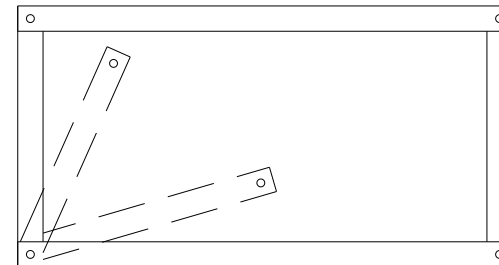


VERTIPRO® US PATENT # 6,059,964

SURFACE OF GRATE MUST BE CLEAN AND FREE OF DIRT AND DEBRIS. POSITION VERTI-PRO SQUARELY ON THE GRATE. INSTALL TOGGLE BOLT ASSEMBLY (SEE FIGURE 2). THE HOLD DOWN PLATE MUST CONTACT BOTH LOWER FRAME FLANGE AND GRATE. THE TOGGLE BOLT MUST ENGAGE TWO BARS ON GRATE. REPEAT ON OPPOSITE SIDE OF VERTI-PRO



THE VERTI-PRO HAS FOUR LEGS THAT UNFOLD JUST LIKE A CARD TABLE. (SEE FIGURE 3) ROTATE LEGS TO UPRIGHT POSITION ON DIAGONAL CORNERS, THIS WILL SUPPORT THE UPPER FRAMEWORK OF THE VERTI-PRO. ALIGN HOLES IN EACH LEG WITH THE TWO HOLES IN UPPER FRAME. INSERT A PLASTIC RETAINER IN OF THE HOLES FROM THE OUTSIDE IN.



MAINTENANCE: INSPECT AFTER EACH RAIN. REMOVE DEBRIS AND CAPTURED SEDIMENT WHEN DEPOSITS REACH 7" OR THE HEIGHT OF THE VERTI-PRO. REMOVE CAPTURED DEBRIS FROM THE VERTI-PRO FABRIC WITH A STIFF BRISTLE BRUSH

EROSION CONTROL MATERIALS
ENVIROSCAPE
 ECM, LTD.

YARD INLET APPLIANCE

PHONE 419-594-3210
 TOLL FREE 888-550-1999
 www.strawblanket.com

